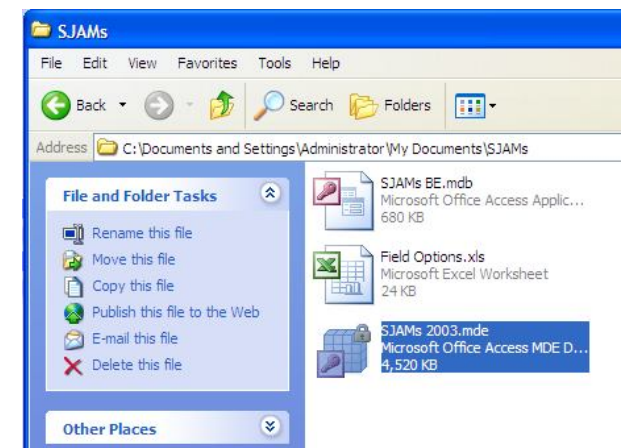
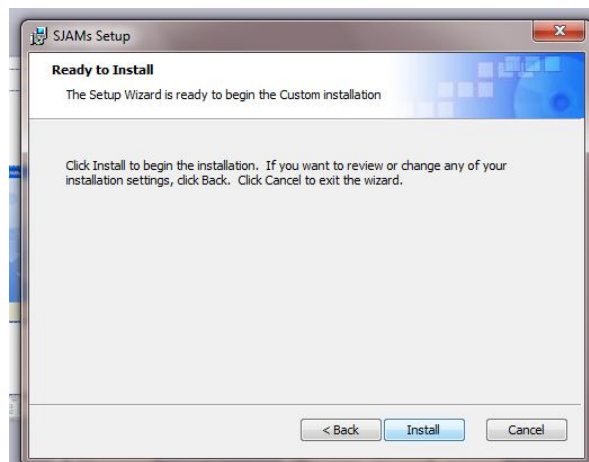
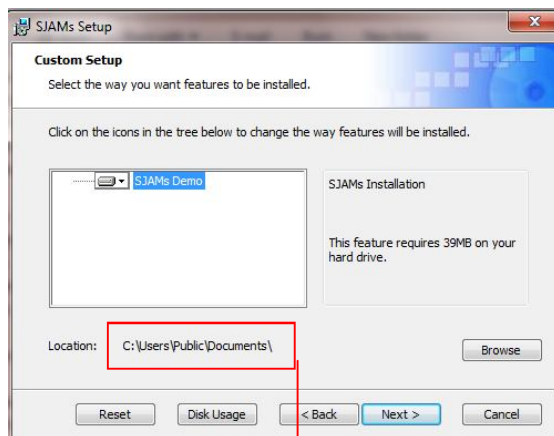
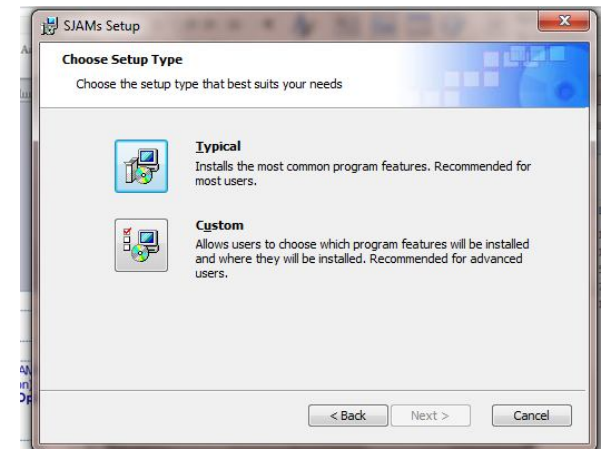
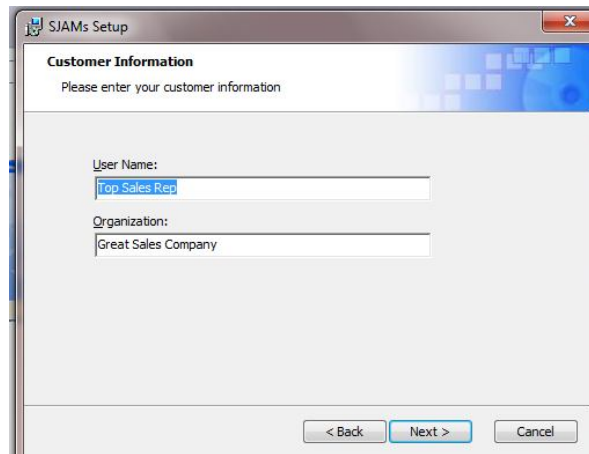
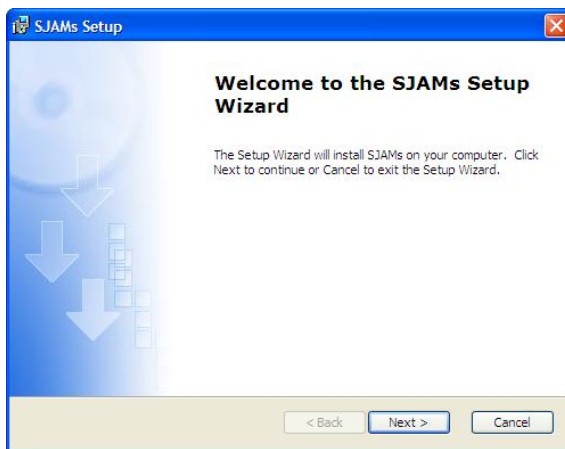


Using the SJAMs Setup Wizard

The SJAMs Set Up Wizard will create a new Folder named **SJAMs** which will include the **SJAMs 2003.mde** (Application) and **SJAMs BE.mdb** (Data). Once the SJAMs 2003 Application is opened and closed, a new excel file, (**Field Options.xls**) will be created. The Field Options file is used to keep records of the custom form settings...

The **SJAMs 2003.mde** is the file where all of the forms and reports are located. The actual data is located in the SJAMs BE.mdb file.



The Setup Wizard will default to "My Documents" as the install Directory.